

4.5 Flanges and chains

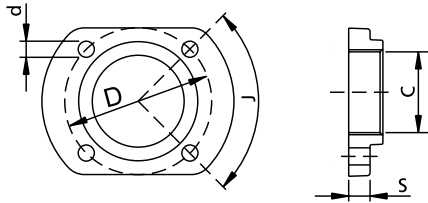
KFL Flange



All product images are indicative only

General characteristics

Flange in GJL-250 cast iron painted with epoxy coating



Cast iron flange to transform the delivery port from GAS 1 1/2" to GAS 2". Designed to be coupled to electric pumps with DN32 PN6 outlet flange.

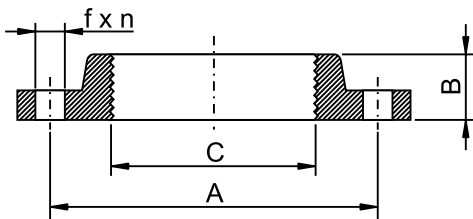
| | C | d | D | J | S | kg |
|------------|------|-----|----|-----|----|------|
| KFL 32/G50 | G 2" | M12 | 90 | 90° | 15 | 0.75 |

All weights and dimensions are indicative only

Dimensions in mm

General characteristics

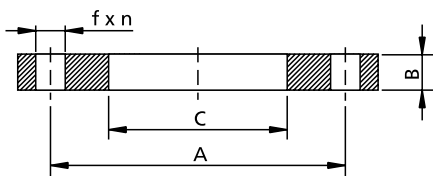
Threaded and welded flanges PN6 and PN 10-16 in accordance with standard EN 1092-1



| | A | B | C | f | n | kg |
|--------------------|-----|----|--------|----|---|-----|
| KFL / G50 PN10-16 | 125 | 30 | 2" | 18 | 4 | 2.8 |
| KFL / G65 PN10-16 | 145 | 30 | 2 1/2" | 18 | 4 | 3.5 |
| KFL / G80 PN10-16 | 160 | 35 | 3" | 18 | 8 | 4.2 |
| KFL / G100 PN10-16 | 180 | 40 | 4" | 18 | 8 | 4.9 |

All weights and dimensions are indicative only

Dimensions in mm



| | A | B | C | f | n | kg |
|-------------------|-----|----|-----|----|----|------|
| KFL / 150 PN10-16 | 240 | 25 | 168 | 22 | 8 | 7.6 |
| KFL / 200 PN10 | 295 | 25 | 216 | 22 | 8 | 10.0 |
| KFL / 250 PN10 | 350 | 30 | 267 | 22 | 12 | 13.4 |
| KFL / 300 PN10 | 400 | 30 | 318 | 22 | 12 | 14.8 |

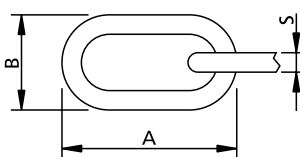
All weights and dimensions are indicative only

Dimensions in mm

KAT Chains

General characteristics

Stainless steel or galvanized steel chains.
Suitable for moving pumps from tanks and wells.



All weights and dimensions are indicative only

Dimensions in mm

| material | dimensions | | | weight (gr/m) | max load (*) (kg) |
|----------|------------|------|----|---------------|-------------------|
| | D | d | s | | |
| AISI 316 | 33 | 19.5 | 5 | 482 | 325 |
| AISI 316 | 51 | 30.5 | 8 | 1250 | 700 |
| Fe 430 | 51 | 30.5 | 8 | 1205 | 650 |
| Fe 430 | 71.5 | 44.5 | 12 | 2895 | 1500 |

(*) Uncertified approximate loads